

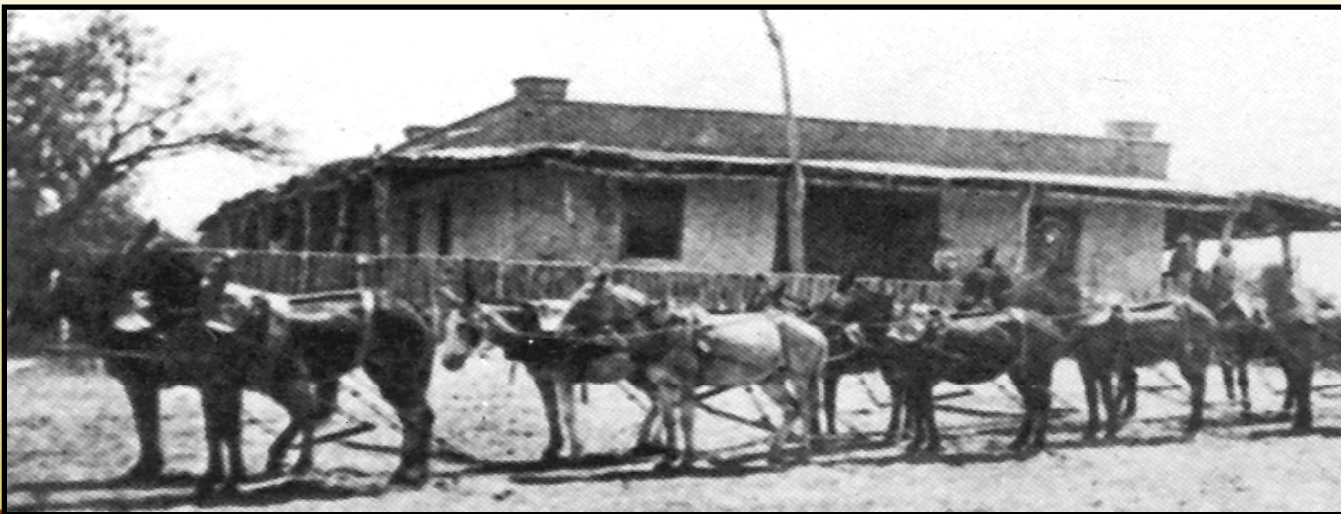
**Creating Regional
Connectivity Through
Partnerships
August 10, 2011**

Mayor Anthony Smith

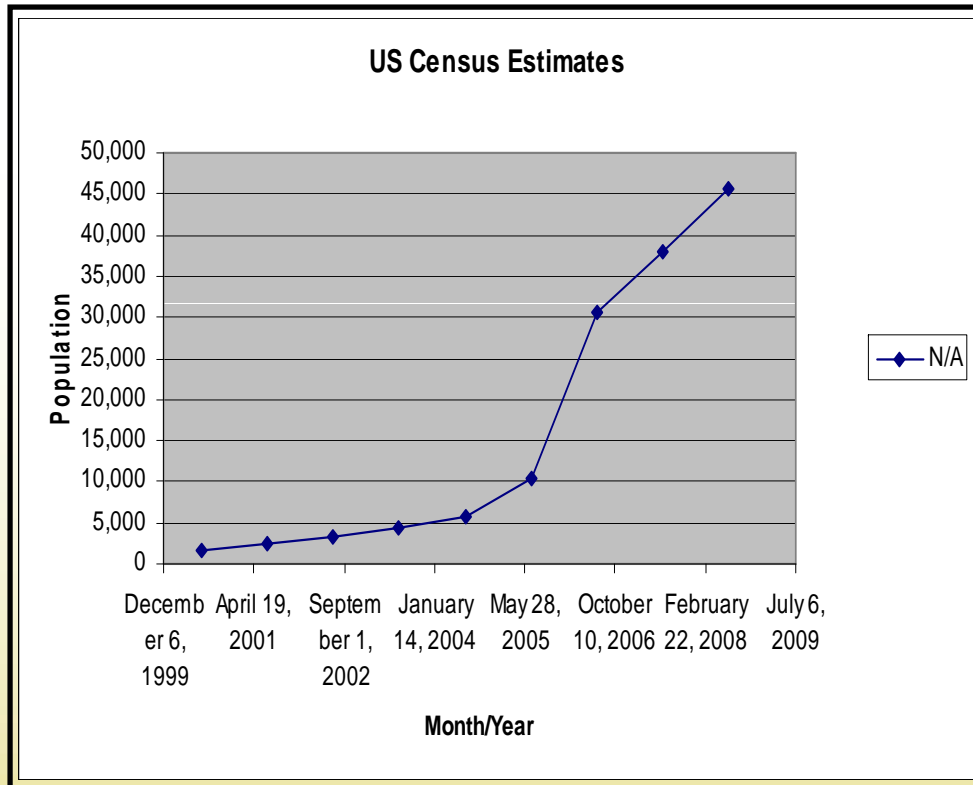


About Maricopa

- ❑ 1850 - 1860 a stagecoach stop, later a 24/7 railroad depot, then a small agriculture community in Pinal County, Arizona
- ❑ Today, a booming suburban community located 30 miles south of Phoenix
- ❑ >70 % trips generated are made north to Metro-Phoenix



Population Growth



2010 Census Results:

- Pinal County 2nd fastest growing county in nation
- City of Maricopa grew > 4,000% to 43,482



Our Challenges

❑ **New City Dealing with Hyper-growth**

- Created in 2003 (after 2000 Census)
- High population growth out-paced infrastructure
- Current surface transportation options limited to one way in and one way out
- City-related infrastructure projects were not included on traditional state or federal planning lists
- Continued growth makes most planning obsolete within 2-5 years



Funding Limitations

- Estimated Cost of Infrastructure Capital Projects = \$493 Million
- Expected Revenue for Infrastructure Capital Projects = \$35 Million
- **Variance = \$458 Million**



Our Strategy

- Pursue Partnerships – Public & Private
- Why Partnerships?
 - Shared Costs
 - Better ideas and plans
 - Accomplish more with less
 - Expedite completion
 - Meet Regional Needs with Joint Planning



Current Partnership Projects

- East/West Corridor
- Grade Separation Projects
 - SR 347 and UPRR
 - White & Parker @ UPRR
- Proposed Interstate 11

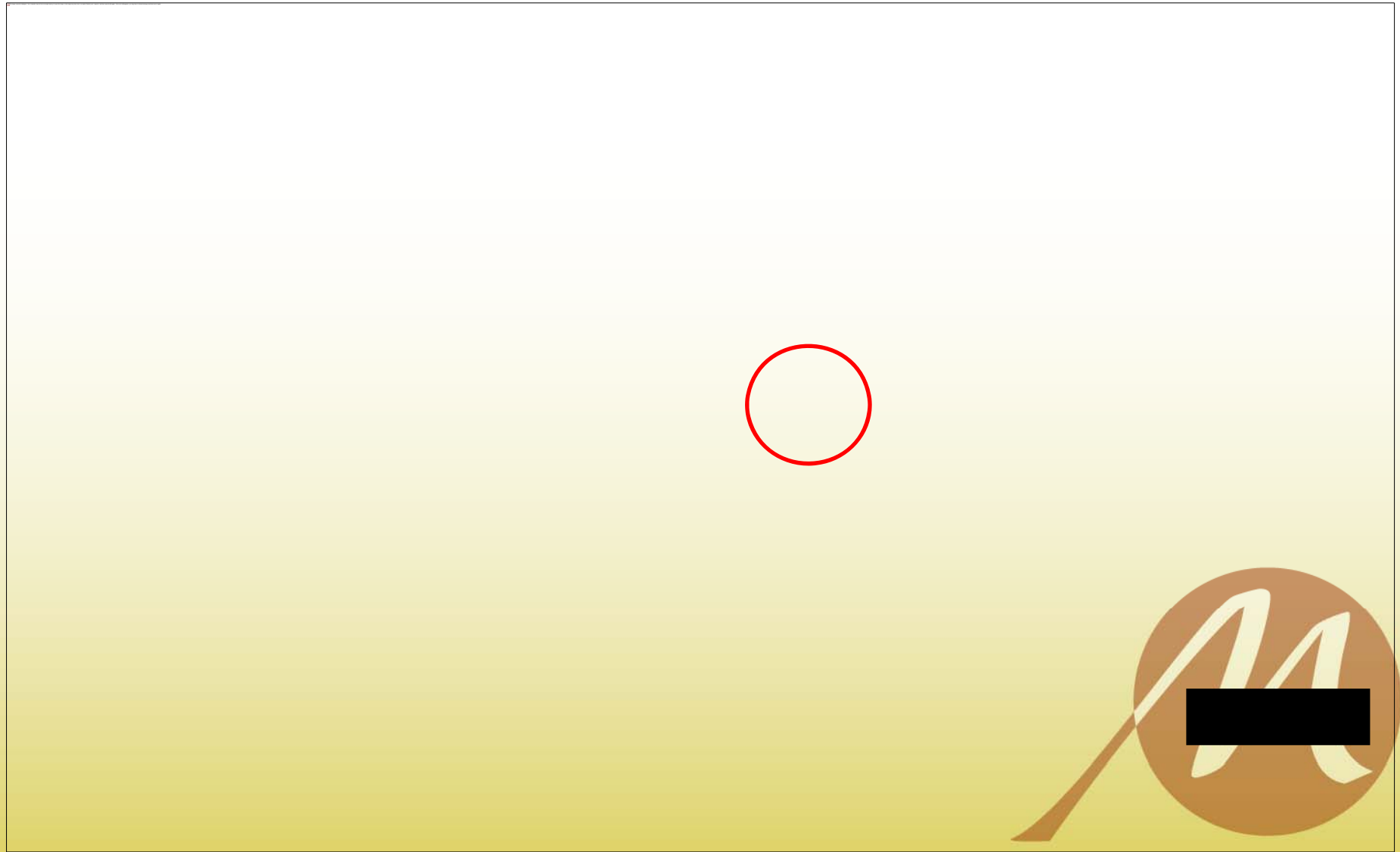


East/West Corridor

- Partnership between Maricopa, Casa Grande And Pinal County
- \$1M Design Concept Report (30% Design) and Environmental Clearance Document
- Costs equally split three ways
- Managed by Pinal County

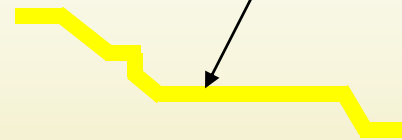


Framework Recommendation at Build-out



East/West Corridor IGA

East/West Corridor



Grade Separation Projects

❑ **State Highway 347 & Union Pacific RR**

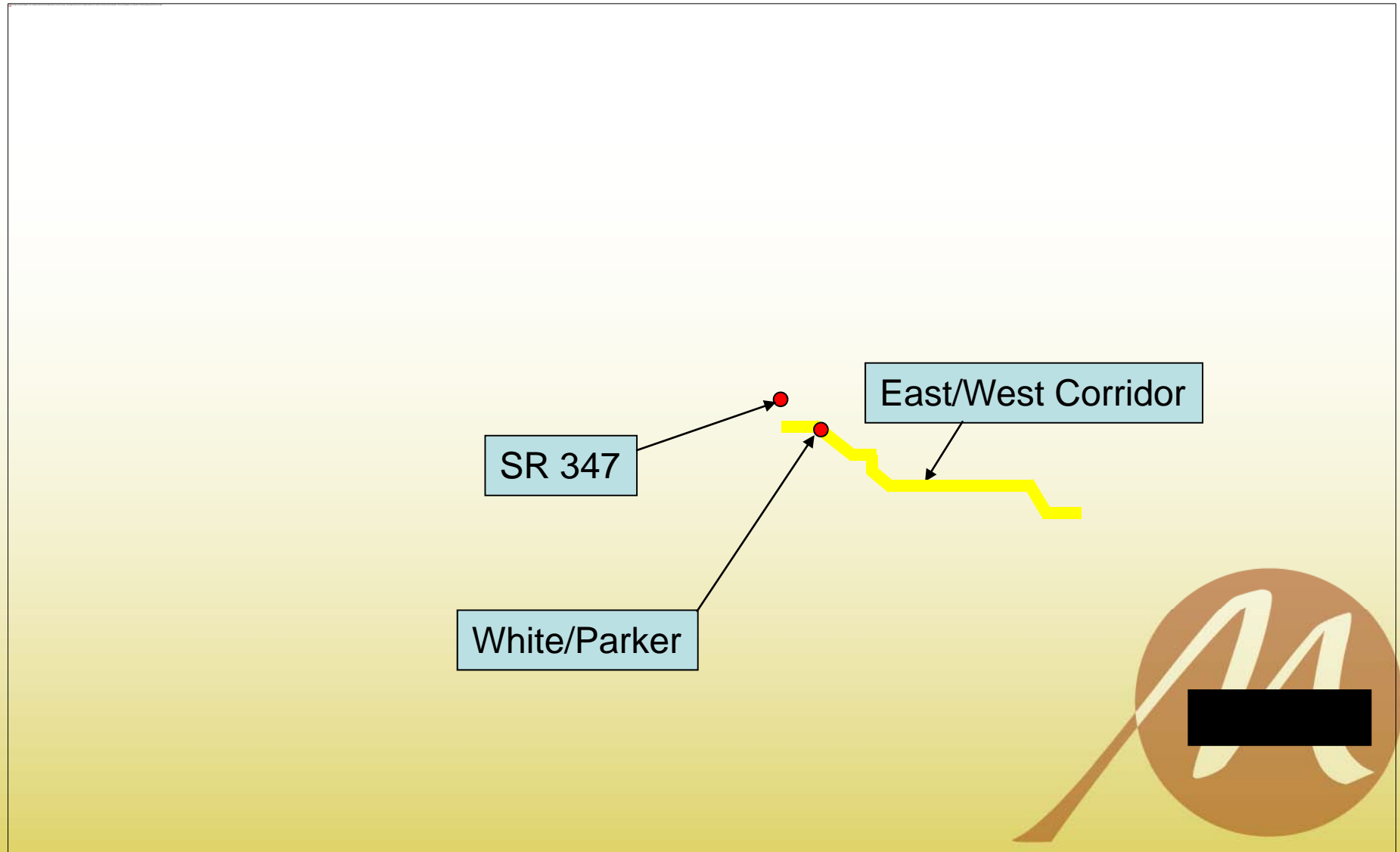
- 33k vehicles and 40 – 70 trains per day
- 2,500 Schoolchildren
- Status: Design Concept Report Phase
- Partner with ADOT

❑ **White/Parker Road & Union Pacific RR**

- Status: Complete Major Investment Study (MIS)
Sept 2011
- Partner with UPRR, Pinal County, Casa Grande, Developers, and Ak-Chin Indian Community



Grade Separation Projects



White & Parker – Maricopa-Casa Grande Highway Major Investment Study



A Major Investment Study (MIS) is a tool for making informed decisions about improving transportation in metropolitan areas.

It provides:

- More complete information on the transportation options available
- A focused evaluation of the transportation needs and issues
- Identifies multimodal transportation options
- Develops measures of benefits, costs and impacts

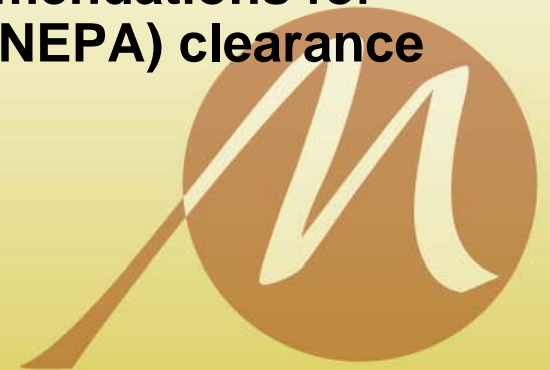


White & Parker – Maricopa-Casa Grande Highway Major Investment Study



MIS Goals & Objectives

- ✓ Identify future transportation needs for the intersection and evaluate alternatives
- ✓ Develop alternatives
- ✓ Identify and recommend multi-modal transportation opportunities
- ✓ Identify the required right-of-way
- ✓ Recommend an access management strategy
- ✓ Identify environmental constraints and recommendations for achieving National Environmental Policy Act (NEPA) clearance
- ✓ Assess the project cost
- ✓ Identify possible funding sources

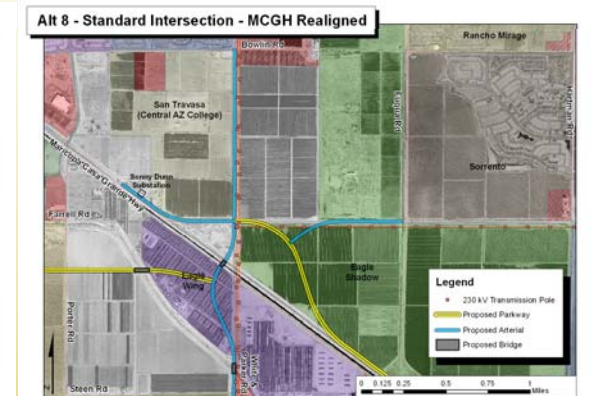
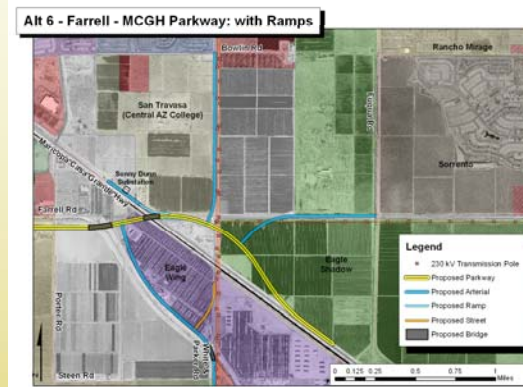
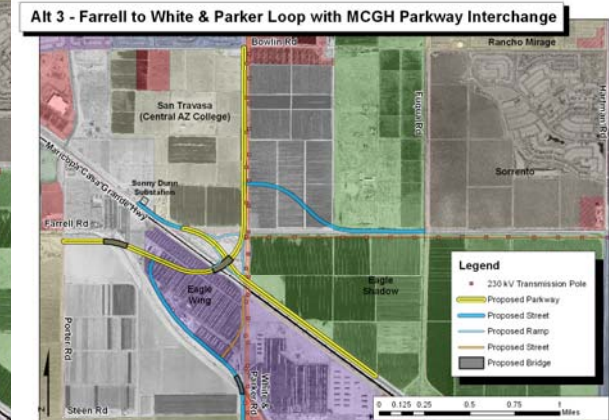


White & Parker – Maricopa-Casa Grande Highway Major Investment Study Alternatives



Key Study Area Features

- Union Pacific Railroad Tracks
- Existing Land Use
- Drainage
- Environmental
- Existing Utilities
- Proposed Developments



Interstate 11

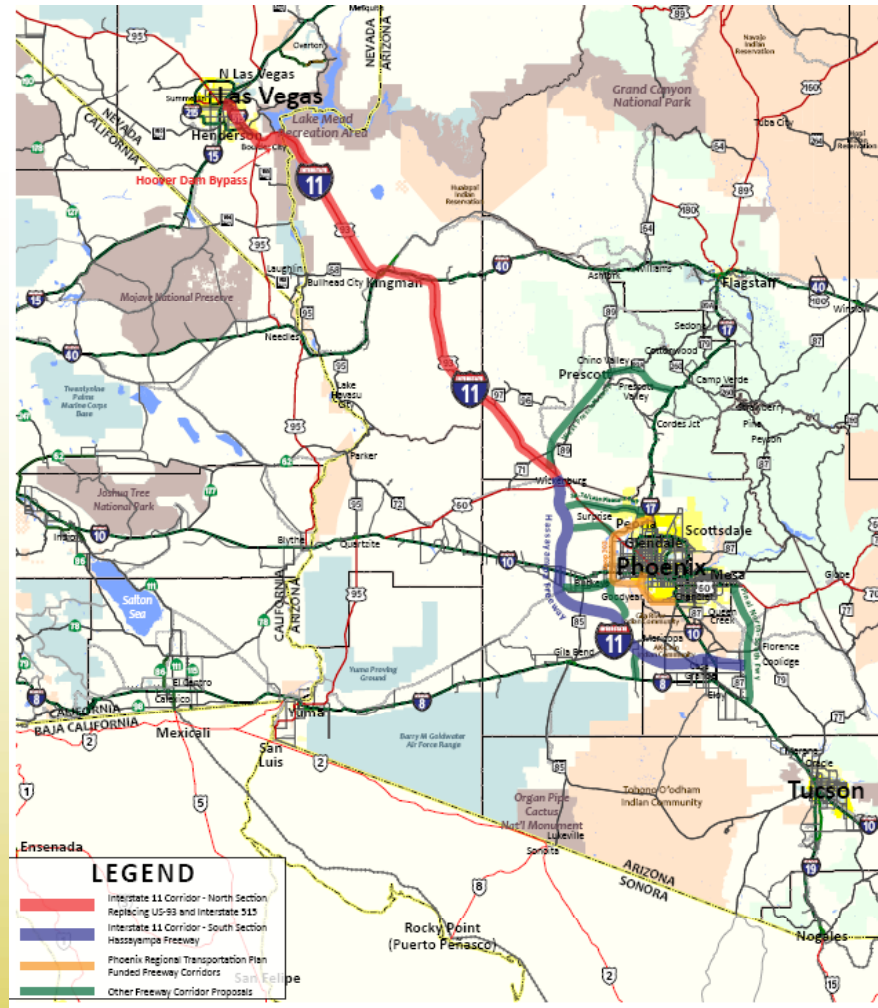
Connecting Arizona and Nevada

- ❑ CAN-DO Coalition – Leaders from Nevada and Arizona
- ❑ **Phoenix** and **Las Vegas** only two cities in the U.S. with populations > 1 M without direct Interstate connection
- ❑ Route commercial truck traffic around the metro-Phoenix area, reducing congestion and pollution within the Phoenix area and on Interstate-17
- ❑ Creates a continuous north-south interstate corridor in the Mountain West region of the United States

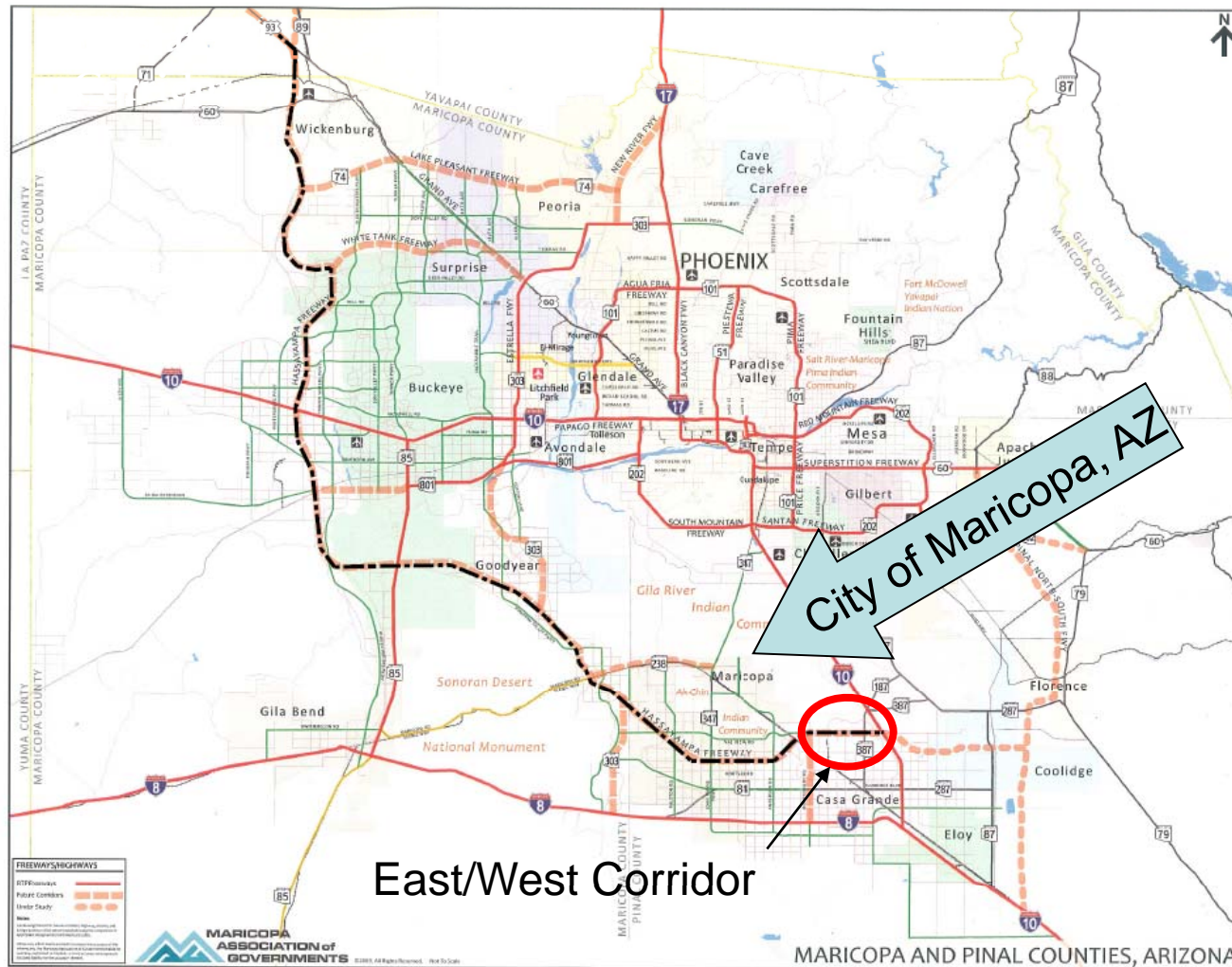


Interstate 11

Connecting Arizona and Nevada



Interstate 11 Proposed Metro Phoenix Route



Interstate 11 Partnerships

- Can-do Coalition (AZ and NV)
- Municipalities
- Arizona Department of
Transportation ADOT
- CANAMEX
- Possible Public/Private
Partnerships



Interstate 11

Partnership Goals

- Finalize Agreement with ADOT for dedication of ROW
- Obtain Interstate Designation
- Obtain ROW
- Secure funds for EIS
- Support I-11 corridor in Statewide Transportation Framework Study

